

you can  
**Canon**

**iR C3200N**

business intelligence

*Experience exceptional colour  
performance and excellence*



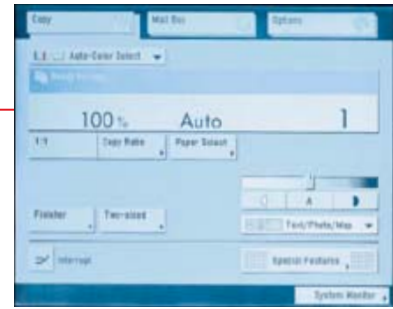


***Innovation everywhere...  
enhancing quality, ease and cost effectiveness***

Colour is critical to successful business communication. Yet it requires intelligent use of colour throughout your company to make sound financial sense. This can be achieved by enhancing output quality. Ensuring networked ease. Providing professional finishing capabilities. And, crucially, enabling strict control of colour costs at every level.

The innovative iRC3200N networked colour printer/copier fulfils all these expectations... and more. Thanks to Canon's industry-leading expertise, it utilises highly advanced technologies to your advantage. Intelligent and unique colour communication capabilities allow you to manage and distribute colour material over your existing networks. Thus optimising efficiency and reducing forwarding, filing and paper costs.





#### PRINT-READY PRODUCTIVITY

The iRC3200N comes complete with a Canon developed embedded print controller, to provide standard network printing for the most demanding users. Speed is a rapid 32 ppm\* for both full colour and black-and-white A4 output. PCL/PS printing is supported, and UFR (Ultra Fast Rendering) for maximum print performance in the Windows environment (98, win 2000 + XP). Plus RIP-while-print ensures optimum processing speeds. Also rapid 'stackless' duplexing at 27 ipm (A4) adds to overall productivity, while reducing paper costs.

#### OUTSTANDING COLOUR QUALITY

At last, colour print quality has a superior look and feel - with professional, matt finish prints. This is achieved by Canon's unique spherical enhanced-polymer, 'S toner'. Oil-less fixing ensures the highest quality with optimal gloss value, complete with an extended colour gamut volume. Print resolution reaches right up to a 2,400 dpi equivalent x 600 dpi, with 256-colour gradation. Delivering accurate and consistent colour where and when you want - throughout your entire enterprise.

\*Speed dependant on document type.



#### PROFESSIONAL PRINT AND COPY COLOUR OUTPUT

Extensive finishing capabilities provide sophisticated output for all your work. A variety of paper media, sizes and weights can be handled - mixing both colour and monochrome output. Full bleed for pages including covers, with folding and saddle stitching, provides professional booklet production. Finishing can even be carried out in-line. All giving you the ability to create exciting and eye-catching documents in-house, at reduced cost.

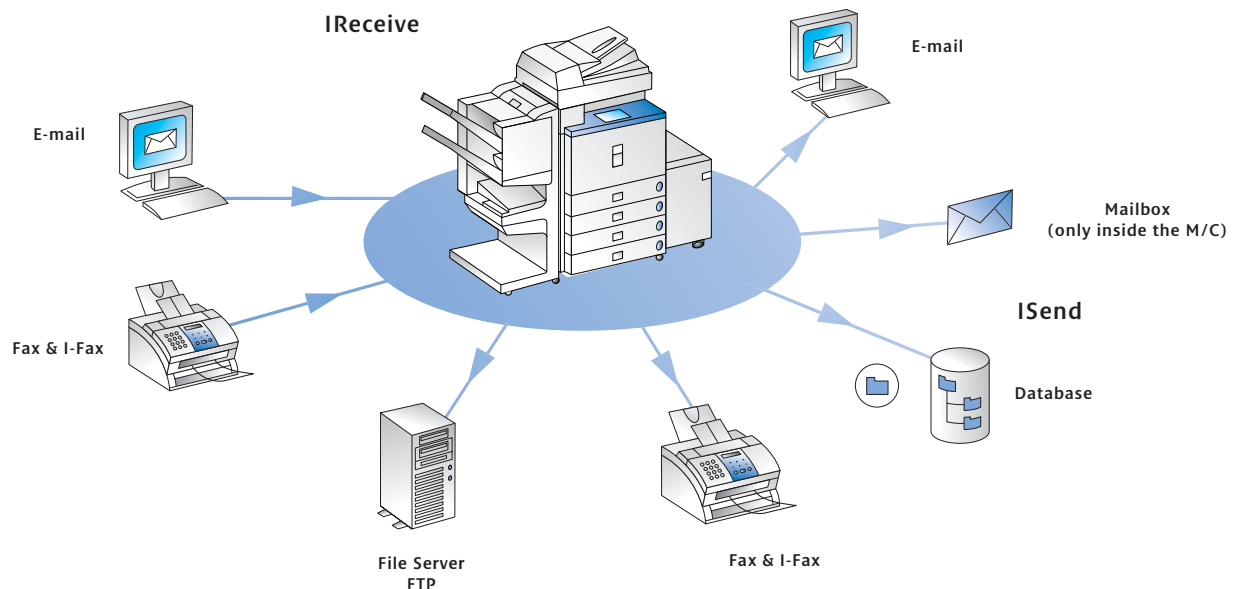
#### 'WE FIT, YOU FORGET' SIMPLICITY

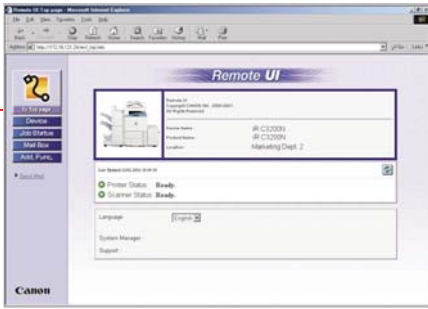
The iRC3200N is fully configured to adapt to all topologies seamlessly. We set it up to suit your system, you simply enjoy the ease and efficiency. Operating the device itself is equally simple. A large-format, touch panel display screen provides a clear menu configuration for intuitive operation. A preview function allows you to trim, crop and mark images directly on the UI screen using a stylus. Also the standard remote user interface with a built-in web browser function gives users complete control from all connected desktops.



## *Imagine the efficiency of intelligent networked colour communication*

What makes the innovative IRC3200N truly unique is a range of intelligent, networked features that are ready to revolutionise the way you work. You benefit from a highly effective central communication hub - that combines scan, print, copy and distribution functions, working together concurrently. This allows you to collect, share, store and manage all your documentation directly over your network. Saving time, streamlining communication and greatly reducing hard copy costs.





## COMBINING COLOUR INPUT FROM DIFFERENT SOURCES

Creating colour documents from a variety of sources has never been easier. You can scan hard copy documents into your system and then combine this with PC data from your favourite programmes (Excel, PowerPoint, etc). This is possible with a standard 40 GB hard disk providing up to 100 mailboxes - fulfilling the role of a Personal Image Server, with secure print functionality. Each user can be allocated a mailbox for temporarily storing, editing and managing high capacity colour data. Allowing them to store, share and work on documents - right through to finishing.

## INTELLIGENT COLOUR SENDING AND DOCUMENT DISTRIBUTION

Sending colour documents to multiple destinations, in a single operation, is equally simple. Once scanned into the system, they can be distributed digitally. This includes sending to individual email addresses, a specific database (via a 'hot' folder), or to a file server for storage or forwarding on to recipients. Thus eliminating the cost of distributing hard copy documents - to save time money and space. Canon's unique colour scan file compression mode is available so heavy file sizes won't congest your network. Plus LDAP (Lightweight Directory Access Protocol) support allows you to access all your company email addresses - saving more time and preventing the risk of address errors.

## RECEIVING AND ROUTING COLOUR THROUGHOUT YOUR ENTERPRISE

The iRC3200N is also capable of receiving and routing all incoming electronic colour information to your organisation. It can then be captured, shared and easily worked on by all authorised users on the network. This enables workgroups to communicate and manage information more efficiently, flexibly and far faster than previously. All in an ingenious way - that has never been possible before with colour documentation.

## MANAGE IT ALL EASILY AT EVERY CONNECTED DESKTOP

Users can access the iRC3200N direct from their desktop workstations - via the remote user interface with web browser function to check on machine status and change the settings. Also password-protected personal mailboxes can be accessed via the Personal Image Server, allowing users to share, work on and distribute colour documents securely. Even complicated operations can be performed with ease, without special training or software.

## SMART, MONEY-SAVING SOLUTIONS

Overall systems administration is vital to control costs and streamline operations. This is where Canon's renowned business intelligence skills come into play, ensuring that you can manage your workflow and costs far more effectively. We provide you with a wide range of software and service solutions, designed to meet your specific applications and needs. The end result is a fully integrated document, print and network management system that serves all your colour requirements in the most competent and cost-effective way.



## *Unlimited applications to meet and exceed your toughest demands*

The iRC3200N brings fresh colour impact and a professional finish to your presentations, business proposals, financial reports and other colour work. At the same time, it opens up an exciting range of new colour opportunities. You can create more sophisticated work with ease. Distribute all your colour information instantly. Staying well ahead of the competition in every aspect of colour communication.

### CAN I MAKE MY BUSINESS STAND OUT?

Certainly. High quality, professional looking documents give you added impact. Documents that you'd normally outsource can now be run off internally; saving you time and costs - while also increasing your flexibility when it comes to those all important updates or changes.

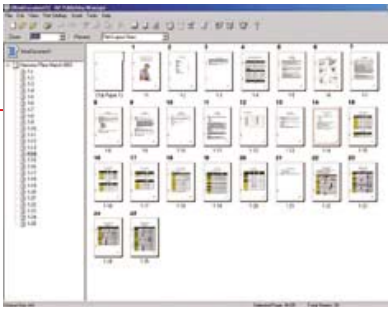
### CAN I INTEGRATE MY HARDCOPY AND ELECTRONIC DOCUMENTS

The iRC3200N handles both mediums expertly. Existing hard copies can be scanned for copying or distribution, while electronic documents are easily merged and printed. Delivery for colour as well as monochrome output is a fast 32 ppm, with mixed output for finishing.

### DOESN'T SENDING COLOUR FILES SLOW DOWN MY NETWORK?

Colour files are data heavy. That's why Canon incorporated a special colour scan file compression feature in the iRC3200N. This allows you to distribute colour work enterprise-wide and worldwide - without overburdening your network.





ISN'T IT ALL TOO TECHNICAL FOR MOST OF MY STAFF?

Not at all. Simply by using their existing internet and network capabilities, office staff will be able to manage even the most complex tasks with ease. Of course, Canon offer training sessions if required - but specific IT skills are not necessary.

IS SERVICING READILY AVAILABLE?

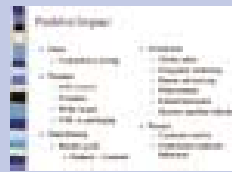
You benefit from full support, with local and dedicated technical servicing at hand for maximum uptime. E-maintenance is also available as an option. This pro-active service provides remote diagnostics, giving security and complete servicing control.

CAN I CONTROL COLOUR COSTS RIGHT ACROSS THE BOARD?

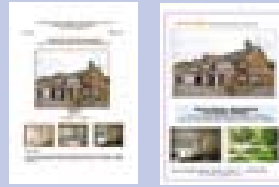
Every aspect of the iRC3200N is designed to increase efficiency while cutting costs - especially with intelligent colour communication reducing the need for hard copy output. This is supplemented by Document Accounting software as well as Canon's consultancy expertise - ensuring strict and effective control of your budget.



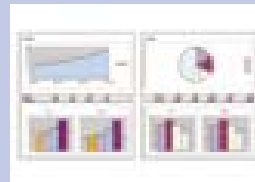
FLYERS/  
ANNOUNCEMENTS



PRESENTATIONS



PROPOSALS



CHARTS/GRAPHS/  
FINANCIAL REPORTS



SPREADSHEETS



SADDLE-STITCHED  
BOOKLETS

# iR C3200N Specifications

<b>Type</b>	Colour Digital Multifunctional Imaging System
<b>Imaging System</b>	Laser Dry Electrostatic Transfer
<b>Developing System</b>	Dry Ni Component System
<b>Fixing System</b>	Heat Roller Fixation System
<b>CPU</b>	MIPS R4000, 250MHz x 2
<b>Image Server Memory Interface</b>	Standard 768MB, 40GB HDD Standard Ethernet (100BASE-TX / 10BASE-T) Optional USB 2.0 (Full speed mode)
<b>First-copy Time</b>	9.8 sec. B&W 13.1 sec. Full Colour
<b>Warm-up Time</b>	Approx. 6 min.
<b>Originals</b>	Sheets, books and solid objects (Up to 2Kg)
<b>Maximum Original Size</b>	A3
<b>Copy Sizes</b>	
Cassette	A5R - A3
Manual	A5R - SRA3
<b>Image Server</b>	40MB
<b>Mail Boxes</b>	Support for Max 100 Mail boxes
<b>Copy Reservation</b>	5 Jobs
<b>Resolution</b>	2400 equivalent x 600 (600 x 600)dpi
<b>Halftone</b>	256 Gradations
<b>Density Adjustment</b>	Automatic Exposure/Manual
<b>Engine Speeds</b>	
A4	32ppm full colour and b&w
A3	16ppm full colour and b&w
<b>Duplexing</b>	Standard automatic stackless
<b>Magnification</b>	
Standard Mode	100%
Preset Reduction	25%, 50%, 61%, 70%, 81%, 86%
Preset Enlargement	115%, 122%, 141%, 200%, 400%
Zoom Mode	25% - 400% (in 1% increments)
<b>Multiple Copies/Prints</b>	1 to 999
<b>Paper Supply</b>	
Standard	Dual 550-sheet Paper Cassettes (1100 Sheets) Stack Bypass (100 Sheets)
Optional	Dual 550-sheet Paper Cassettes (1100 Sheets) Paper Deck - 2,500 Max. Total = 5,000 Sheets
<b>Paper Weights</b>	64 to 209g/m <sup>2</sup> (Cassettes) 64 to 253g/m <sup>2</sup> (Manual)
<b>Dimensions</b>	799mm x 620mm x 786mm
<b>Weight</b>	126kg
<b>Power Requirements</b>	240V, 15A, 50Hz/60Hz
<b>Multi PDL Network Printing (Standard)</b>	
<b>Print Speed</b>	32ppm full colour and b&w A4 16ppm full colour and b&w A3 With duplex and full finishing available
<b>Print Size</b>	A5R - SRA3
<b>PDL Support</b>	PCLSe, PostScript 3 Emulation and UFR
<b>Memory</b>	Standard 768MB
<b>Hard Disk</b>	40GB (standard image server)
<b>CPU</b>	Mobile Pentium III Dual (2) 250MHz
<b>Fonts</b>	136 PostScript® Fonts, Barcode
<b>Network OS</b>	Windows® 95/98/ME/NT4.0/2000/XP, Mac OS9.0, Mac OS X
<b>Network Communication Interface (Standard)</b>	
<b>Topology</b>	Ethernet 100BASE-TX/10Base-T, Token Ring (optional)
<b>Protocol</b>	IPX/SPX (NDS, Binary, NDPS) TCP/IP (Port 9100, LPD, IPP11) Appletalk (PAP)
<b>Colour Universal Send Kit - A1</b>	
<b>Preview Access</b>	Multiage document preview function Single Sign On (Windows 2000 Server), Single Device Log-In (SDL)
<b>Sending Methods</b>	e-Mail, IW Document Manager to Server (FTP,SMB,NCP)
<b>Address Book</b>	LDAP and Ad Hoc entry and storage
<b>File Format</b>	Single page TIFF, multi-page TIFF, PDF, Multi page PDF
<b>Sending Sizes</b>	A3 - A3
<b>DADF-K1</b>	<b>DADF-K1</b>
<b>Original Sizes</b>	A5 - A3
<b>Original Weights</b>	52 - 105g/m <sup>2</sup>
<b>Original Capacity</b>	30 sheets (A4) 15 sheets (A3)
<b>Dimensions (H x W x D)</b>	165mm x 580mm x 506mm
<b>Weight</b>	13kg
<b>Colour Image Reader-C1</b>	
<b>Interface</b>	Ethernet (100BASE-TX/10BASE-T)
<b>Scanning Resolution</b>	75 - 600dpi
<b>Smoothing</b>	Super Smoothing Technology
<b>Power Consumption</b>	1.5kw max.
<b>Scanning Area</b>	Up to A3
<b>Driver</b>	Network Twain
<b>Dimensions (H x W x D)</b>	90mm x 585mm x 540mm
<b>Weight</b>	13.5kg

<b>Cassette Feeding Unit-X1</b>	
<b>Number of Drawers</b>	2x Front-loading adjustable drawers
<b>Paper Capacity</b>	2 x 600 Sheets
<b>Acceptable Paper Weights</b>	64 - 209 g/m <sup>2</sup>
<b>Dimensions (H x W x D)</b>	312mm x 620mm x 705mm
<b>Weight</b>	30kg
<b>Saddle Finisher-N2</b>	
<b>Number of trays</b>	Three
<b>Tray Capacity</b>	
Top Tray	1,000 Sheets (A4)
Lower Tray	100 Sheets (A4) 250 Sheets (A4) 500 Sheets
<b>Saddle-stitch Tray</b>	
<b>Staple Position</b>	Multiposition Stapling (1) Top Corner (2) Side Margin (3) Saddle-stitch
<b>Stapling Capacity</b>	50 Sheets (A4) 10 Sheets Saddle-stitched (A4, A3)
<b>Saddle-stitch Specifications</b>	
Paper Sizes	B4, A4R, A3
Paper Weight	64 to 105g/m <sup>2</sup> 64 to 253g/m <sup>2</sup> (Cover only)
<b>Stapling Capacity</b>	15 Sheets (60 pages)
<b>Folding</b>	V-folding Standard
<b>Dimensions (H x W x D)</b>	1066mm x 682mm x 615mm
<b>Weight</b>	57kg
<b>Finisher-N1</b>	
<b>Number of Trays</b>	Two
<b>Acceptable Paper Sizes</b>	A5R to A3
<b>Acceptable Paper Weights</b>	64 to 253g/m <sup>2</sup>
<b>Max. Capacity</b>	1,000 Sheets (A4, B5, A5R) 500 Sheets (A3, B4, A4R, B5R)
<b>Staple Positions</b>	1 - any corner 2 - side margin
<b>Staple Capability</b>	50 Sheets (A4) 30 Sheets (A3)
<b>Weight</b>	37kg
<b>Stapler Sorter-M1</b>	
<b>Number of Trays</b>	One
<b>Acceptable Paper Sizes</b>	A5R - A3
<b>Acceptable Paper Weights</b>	64 - 253 g/m <sup>2</sup>
<b>Max. Capacity</b>	1000 Sheets (A4) 500 Sheets (A3) 30 Sheets (A4) 15 Sheets (A3)
<b>Staple Mode</b>	
<b>Dimensions (H x W x D)</b>	362mm x 574mm x 553mm
<b>Weight</b>	18kg
<b>Paper Deck-P1</b>	
<b>Copy Size</b>	A4, B5
<b>Paper Weights</b>	64 - 209 g/m <sup>2</sup>
<b>Capacity</b>	2,500 sheets
<b>Dimensions (H x W x D)</b>	432mm x 324mm x 591mm
<b>Weight</b>	30kg
<b>Super-G3 Fax Board-M1</b>	
<b>Applicable Line</b>	Public Switched Telephone Network (PSTN)
<b>Connection Lines</b>	One
<b>Transmission Time</b>	ECM-MMR Approx. 3 seconds per page** (@33,600Kbps)
<b>Compression System</b>	MMR, MR, MH, JBIG
<b>Sending Sizes</b>	A5R to A3
<b>Auto Dial Functions</b>	Address Book: 1800 Destinations (Total)
<b>Image Memory</b>	Approx. 3,700 pages
<b>Max. Confidential Fax Inboxes</b>	100
<b>Pedestal-C1</b>	
<b>Dimensions (H x W x D)</b>	312mm x 620mm x 705mm
<b>Weight</b>	24kg
<b>Accessories</b>	
	Colour Universal Send Kit A2, Image Reader-C1, Feeder DADF-K1, Cassette Feeding Unit X1, Saddle Finisher N2, Finisher N1, Stapler/Sorter M1, Paper Deck-P1, Plain Pedestal-C1, Super-G3 Fax Board M1, Copy Tray-H1, Document Tray-J1, FL Cassette X1, Key Switch Unit A1, Copy Tray H1, Card Reader D1, iR Security Kit A1, Token Ring Network Card, USB I/F Board
	**Approximate 3-second-per-page fax transmission time based on ITU-T No.1 Chart (MMR, Standard Mode) at 33.6 Kbps modem speed when transmitting to another v.34 machine. The Public Switched Telephone Network (PSTN) currently supports 28.8 Kbps modem speeds or lower, depending on telephone line conditions.

you can  
**Canon**



**Canon Inc.**  
30-2, Shimomaruko 3-Chome, Ohta-ku,  
Tokyo 146-8501, Japan  
www.canon.com

Europe, Africa and Middle East  
**Canon Europa N.V.**  
P.O. Box 2262, 1180 EG Amstelveen,  
the Netherlands  
www.canon-europe.com

English Edition 0336V739  
© Canon Europa N.V., 2003 (0503)

**Canon (U.K.) Limited**  
Woodhatch, Reigate  
Surrey RH2 8BF  
Telephone No: 08000 353535  
Facsimile: 01737 220022  
www.canon.co.uk

™ All company and/or product names are trademarks and/or registered trademarks of their respective manufacturers in their markets and/or countries. Canon reserves the right to change specifications without notice.