

you can  
**Canon**

**iR 3170Ci**  
**iR 2570Ci**  
Multi Functional Printers

Brilliant in black and white.  
Even better with smart colour.

The black and white  
multifunctional with the added  
convenience of smart colour.

iR 2570Ci / iR 3170Ci



**Why is it better having a workgroup shared device?**

With an iR 2570/3170Ci you save the cost and office space used by separate printers, copiers and scanners. Everyone on your network can share information electronically and securely. And everyone can finish documents professionally in-house without the expense of outsourcing.

Add the **creativity of colour** to your output – a smart decision for intelligent businesses.



# Everything your business needs in black and white. And more.

Finding the right multifunctional device for your office is now easy thanks to Canon's highly innovative iR 2570/3170Ci. Compact, yet powerfully equipped for a diverse range of office tasks, its innovative smart colour technology brings colour document input and output to black and white office devices. So you can communicate with real visual impact - at black and white affordability.

## Colour when you need it

Wouldn't it be great to have the ability to print in high quality colour when you need to, without paying to use a local copyshop, or waiting ages for a desktop printer to complete the job? Well now you can with a black and white multifunctional that knows when to print in colour - and when not to. By analysing your source documents and files, the iR 2570/3170Ci automatically determines which are in colour, and prints or copies them accordingly. That way **you only pay for colour when you use it - a revolution in affordable office reproduction.** And as colour visuals are proven to get you noticed - with up to 39% better recognition\* - using Canon's iR 2570/3170Ci with smart colour is the intelligent decision for forward thinking businesses.

\*(Source) Case and Company Management Consultants, Maritz Motivation Inc. and the Bureau of Advertising

## Information that puts you in control

System intelligence extends beyond the use of smart colour, giving business owners unrivalled levels of information and control. With in-built **ID management**, you can specify users and **limit their B&W or colour usage**, providing controlled access to the machine. And to keep a firm eye on costs, additional applications such as **Netspot Accountant MEAP** allow you to accurately assess usage by users, groups or departments, providing accurate running costs detailing all the machine usage statistics and enabling you, when required, to set specific output limits. That way, outstanding office communication is managed according to the financial parameters that you specify.

## A new way to manage office communication

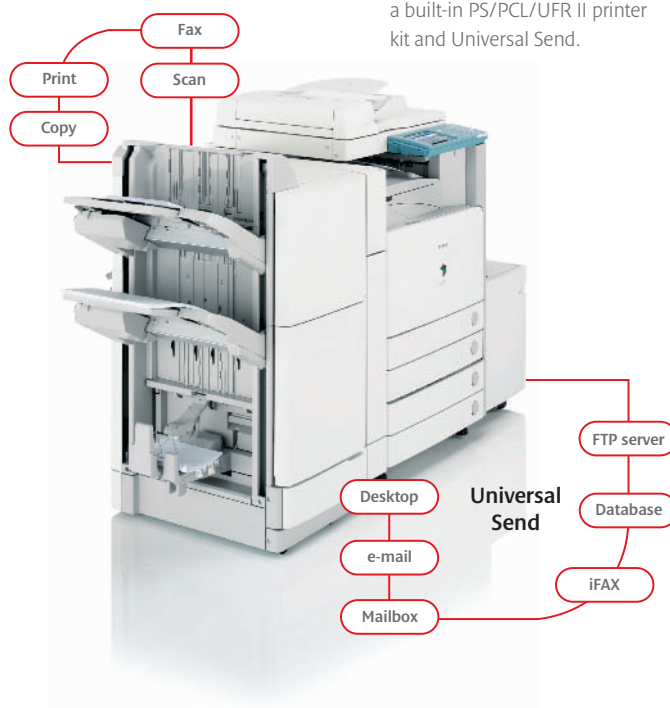
With Canon's space-saving MFP's you can enjoy the benefits of multiple devices from a single, powerful device. **Print** detailed reports in black and white or colour, **scan** hard-copy documents straight to **e-mail**, walk up and **copy**, send **faxes** and even access the **web** without a PC - it's all made simple with the compact iR 2570/3170Ci.

## Modularity to suit your needs

We've created a range of modular devices to satisfy a variety of requirements and budgetary constraints. The multifunctional **iR 3170Ci runs at a quick 31 ppm in black and white and 7 ppm in colour, whilst the iR 2570Ci operates at 25 ppm in black and white and 7 ppm in colour.**

## Network Ready

Choose the version that suits your needs. The iR 3170 and the iR 2570 copiers can be connected to a printer kit\* and the iR 3170Ci and iR 2570Ci come fully network ready with a built-in PS/PCL/UFRR II printer kit and Universal Send.



\*Optional

# Invigorate your network management capability.

The iR 2570/3170Ci brings additional power to your network from a single device that absorbs the workload of many. Designed to fit quickly and seamlessly into any network environment, the iR is equipped with a range of software tools that ensure set-up and ongoing management is effortless – with or without your own dedicated IT resources.

And with a depth of customisable capability that ensures the iR 2570/3170Ci is adaptable to the evolving needs of your business, it's built for now and ready for the future.

## Space saving innovation

In today's offices space is a premium. Business owners and IT managers need office hardware that's productive and integrated, not intrusive. With the iR 2570/3170Ci that's exactly what you get. By amalgamating the capabilities of many devices into one, you can **free up valuable space** in your office. And thanks to Canon's innovative thinking, users can produce **staple-finished documents** without the need for an external staple sorter, courtesy of the **internal finishing unit**. With a **compact footprint** measuring 565 x 755 x 754mm, you'll be amazed how little can do so much.



## Instantly ready for the network

The system is designed to fit seamlessly into your network environment. Supporting industry-standard **PCL** and **PostScript** printing, the device is also equipped with Canon's unique UFR II language which can **enhance printing speeds for Windows applications**. Not only that, but the iR 2570/3170Ci also offers the speed and quality of an Adobe PostScript Printer Unit Option – rare for machines of its type.

**Set up and configuration** is easy for IT managers. For multiple device installations, a range of advanced set up, configuration and management tools, allow for effortless integration, including **one-to-many set up protocols**. That way, you set up one device and replicate its settings onto the other devices, **saving time in installation and configuration**. And also benefit from our range of **utilities** for day to day management and control.

### The utilities available are:

- NetSpot Device Installer
- NetSpot Console
- NetSpot Job Monitor
- NetSpot Resource Downloader
- Remote User Interface



Use and control the device with confidence at your desktop using a familiar web-based interface.

## Maximising uptime

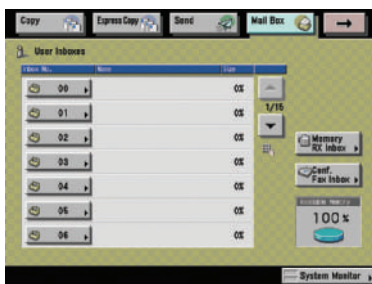
As well as on-site support, you also have the option of e-Maintenance which detects the machine fault automatically, alerting the service centre to send an engineer, minimising our response time. (Please check availability of this option with your local Canon supplier)

## Built for the security conscious

Network-enabled user authentication tools, such as Single Sign-on (SSO), permit existing network IDs and passwords to be used so employees can maintain a single identity for all network security functions – ideal in larger, corporate environments.

Once device access is granted, a number of **advanced security and encryption** features go to work to prevent data from being compromised or intercepted by outsiders. For even greater protection, the optional **iR Security Kit** initiates the **encryption** and **overwriting** of hard disks to completely erase stored data.

The **Secure Print** and **Personal Mailbox** functions ensure that once a document is sent to print, only its author can retrieve it from the device – ideal when printing out **confidential documents**.



Send and store your documents securely on the device with Mailbox.

## Future proof investment

Using MEAP (Multifunctional Embedded Application Platform), Canon's device-embedded Java based application platform, enables new and customised software developments to be incorporated directly within the device on-site. This way, your investment keeps pace with the very latest in office communication technology **ensuring a healthy return on investment for years to come**.



# The iR 2570Ci and iR 3170Ci. A simply intelligent way to communicate.

Sharing information and managing office communication is a delight with the iR 2570/3170Ci. A colour touch-screen provides instant walk-up access and ease of use. Designed to meet the network communication needs of individuals and busy workgroups, you can look forward to an intelligent multifunctional that's a smart addition to any team.

iR 2570/3170Ci  
the smart way to meet  
all your deadlines.

## Instant access for all

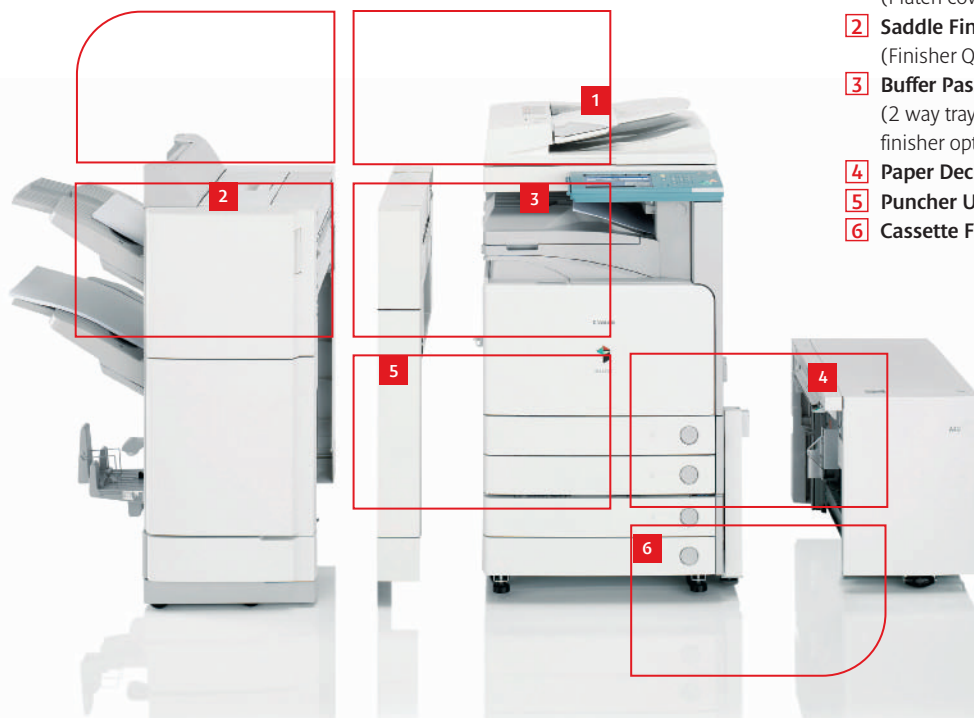


Browse the world of the internet directly at the device and without the need for a PC.

Access the web directly at the device, making it possible to print pages and PDFs directly from websites - without the need for a PC. Employees can even access the company intranet which means documents like holiday forms, contracts and manuals can be printed easily and instantly.

**A simple colour touch screen panel** provides instant walk-up access to all staff. Simple copying jobs, scanning documents to email accounts, or sophisticated colour booklet creation and collation are all **easily achievable via step-by-step menus**.

**Disabled users** can also operate system functions from a laptop or desktop PC using the optional **Remote Operator's Software Kit**, which emulates the control panel. **Visually impaired users** can receive audible job confirmation through the optional **Voice Guidance Kit**. And the optional **ADF handle** allows users in **wheelchairs** to close the opened document feeder.



- 1 **DADF-L1**  
(Platen cover optional)
- 2 **Saddle Finisher Q4**  
(Finisher Q3 available)
- 3 **Buffer Pass Unit**  
(2 way tray or internal finisher optional)
- 4 **Paper Deck**
- 5 **Puncher Unit**
- 6 **Cassette Feeding Unit**

## From start to finish

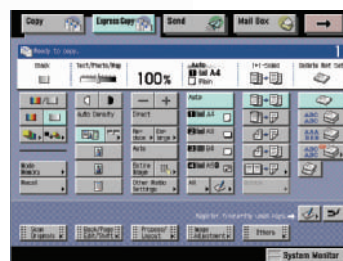
The system offers levels of document production that you might only expect to be available from professional print suppliers. With an innovative **internal finisher** you have everything required to produce exceptional quality documents in style. In addition to automatic collation, **hole punching** and **stapling**, users can opt for an impressive range of finishes - even producing **colour saddle-stitched** booklets. And thanks to its accessible user-interface, performing these tasks is no problem at all.

Using Canon's cutting edge **iW Publishing Manager (iWPM)** software, you can also create professional documents by merging the component parts from different sources, (for example, Microsoft™ Excel, Microsoft™ PowerPoint, etc), without having to collate them separately - offering a huge time saving in the creation and print of multiple sources documents.

## Advanced control for users

Canon's **Send feature** enables documents to be **scanned at up to 44 ipm in B&W or colour**. A key function of Canon devices, offered as standard on the iR 2570Ci and iR 3170Ci, is the ability **to scan and send documents** to different sources, by email or to file folder. As part of this the **searchable PDF (OCR) Mode\*** creates searchable scanned files to locate information quickly, and is ideal when searching documents by key words in a document management database.

Furthermore, users can minimize the risk of unauthorized distribution by **encrypting PDF files** with a password so that only intended recipients can open, print, or edit the document.



Great for all users, **express copy** reduces the number of steps for more sophisticated copying jobs to save time.

## Environmentally responsible

As an **energy saving resource** the iR 2570/3170Ci is ahead of its time. In sleep mode, **the system cuts power consumption down**, keeping operational costs to a minimum. And by carefully assessing the manufacturing process, this complies with the new European Parliament **ROHS (Restriction of Hazardous Substances) Directive**, applicable from 2006. The iR 3170Ci has also earned a coveted **Energy Star** as a multifunctional printer and copier.



Booklet

Staple



Duplex

Group &amp; Collate

# Specifications iR 3170Ci and iR 2570Ci

Type	Desktop
Maximum Original Size	A3
Copy Sizes	Cassette: A5R - A3 Stack Bypass: A5 - SRA3 (320 x 457mm)
Resolution	Scanning: 600dpi x 600dpi Copying: 600dpi x 600dpi Printing: 2400dpi equivalent x 600dpi 256 Gradations
Copy/Print Speed	<b>A4</b> 31 ppm Black & White (iR 3170Ci), 25 ppm (iR 2570Ci) 7 ppm full colour
Magnification	<b>A3</b> 16 ppm Black & White 3.5 ppm full colour Zoom: 25-400% Fixed: 25%, 50%, 71%, 100%, 141%, 200%, 400%
First copy time	Black & White: 8 sec Full colour: 23.9 sec
Warm-Up Time	6 minutes
Multiple Copies/Prints	1 to 999 sheets
Duplexing	Standard automatic stackless
Paper weight	Cassette: 64 to 163 g/m <sup>2</sup> Stack Bypass: 64 to 163 g/m <sup>2</sup> Duplex: 64 to 105 g/m <sup>2</sup>
Cassette Paper Capacity	Universal: A5R to A3, 305 x 457mm Standard 550 sheets x 2 cassettes (1100 sheets) Multi Stack Bypass: 50 sheets (80 g/m <sup>2</sup> ) Optional 550 sheets x 2 cassettes (1100 sheets) Paper deck: 2500 sheets Total paper capacity: 4750 sheets
<b>SYSTEMS</b>	
CPU	Canon Custom Processor, 533MHz + 400MHz
Memory	iR 3170C/2570C: 512MB to 1024MB (Optional) iR 3170Ci/2570Ci: 1024MB
Hard Disk Drive	80GB
Interface	Ethernet (100Base-TX/10Base-T) by USB
Power Supply	230V/6A/50Hz
Power Consumption(W)	1.5 kW maximum
Dimensions (WxDxH)	565 x 755 x 754mm
Weight	86.2 kg
<b>COLOUR MULTI-PDL PRINTER KIT-D1 (STANDARD FOR THE iR 3170Ci/2570Ci)</b>	
PDL	PCL5c, PostScript 3 Emulation and UFR II
Resolution	2400 equivalent x 600dpi
Memory	1024MB (Uses Main unit RAM)
Hard Disk	80GB (Uses Main unit HDD)
CPU	Canon Custom Processor 533MHz & 400MHz (Uses Main unit CPU)
PS Fonts	Roman136
PCL Fonts	Roman80, Bitmap1, Barcode30, OCR2
Supported OS	PCL: Windows 98/Me/NT4.0/2000/XP/2003 PS: Windows 98/Me/NT4.0/2000/XP/2003, Mac OSX (10.2 or later) UFR II: Windows 2000/XP/2003, Mac OS X (10.1.5 or later) Mac-PPD: Mac OS 8 or later
Interface	Ethernet (100Base-TX/10Base-T), USB
Network Protocol	TCP/IP (LPD/Port9100/IPP/PPS/SMB/FTP), IPX/SPX (NDS, Bindery, NDPS-GW), AppleTalk
Pull Scan	Network TWIN Driver (75 to 600dpi 24bit color / 8bit grayscale / Black & White)
<b>COLOUR NETWORK PRINTER UNIT-F1*</b>	
PDL	Adobe PostScript 3, PCL5c
Resolution	2400 equivalent x 600dpi
Memory	128MB to 256MB (Optional)
Hard Disk	20GB
CPU	Intel Mobile PentiumIII 850MHz
PS Fonts	Roman136
PCL Fonts	Roman113 (including Barcode Fonts)
Supported OS	PS: Windows 98/ME/NT4.0/2000/XP/2003, Mac OS 9.0 / X (10.2, 10.3) PCL: Windows 98/ME/NT4.0/2000/XP/2003
Interface	IEEE1284, Ethernet (100Base-TX, 10Base-T)
Network Protocol	TCP/IP (LPD/FTP/Port9100/IPP/SMB/email), IPX/SPX (NDS, Bindery, NDPS-GW), AppleTalk
* iR 25/3170C only	

<b>COLOUR UNIVERSAL SEND KIT-D1 (STANDARD FOR THE iR 3170Ci/2570Ci)</b>	
Scan Speed	A4 44 ipm 300dpi (Colour / Black & White) with DADF
Scan Resolution	100dpi, 150dpi, 200 x 100dpi, 200dpi, 200 x 400dpi, 300dpi, 400dpi, 600dpi
Destinations	E-Mail/Internet FAX (SMTP), PC (SMB, FTP, NCP), iWDM
Address book	LDAP, Local (Max. 1800)
File Format	Single TIFF, JPEG, PDF Multi TIFF, PDF
<b>PDF HIGH COMPRESSION KIT-A1 (FOR COMPRESSION OF COLOUR SCAN DATA)</b>	
Format	PDF
Resolution	300dpi
<b>DADF-L1</b>	
Paper size	A3-A5R
Paper weight	Single sided original: 42 to 128 g/m <sup>2</sup> Double sided original: 50 to 128 g/m <sup>2</sup>
Max. Number of originals	50 sheets (80 g/m <sup>2</sup> )
Document Scanning speed (max.)	Copy A4 28 ipm 600dpi (Colour / Black & White) Scan A4 44 ipm 300dpi (Colour / Black & White)
Dimensions (WxDxH)	565 x 538 x 122 mm
Weight	Approx. 8.5 kg
<b>CASSETTE FEEDING UNIT-Y2</b>	
Type	2 Front-loading adjustable drawers
Paper Weight	64 to 163 g/m <sup>2</sup>
Paper Capacity	550 sheets (80 g/m <sup>2</sup> ) x 2 cassettes
Dimensions(W x D x H)	565 x 700 x 251.5 mm
Weight	Approx. 23 kg
<b>PAPER DECK-Q1</b>	
Paper Size	A4
Paper Weight	64 to 105 g/m <sup>2</sup>
Paper Capacity	2500 sheets (80 g/m <sup>2</sup> )
Dimensions(W x D x H)	372 x 591 x 473 mm
Weight	Approx. 29.6 kg
<b>FINISHER-P1</b>	
Number of trays	One stack tray (Inner)
Tray capacity	A4-A5R: 500 sheets A3: 250 sheets
Staple position	Corner, Double
Staple capacity	A4: 50 sheets A3: 30 sheets
Weight	Approx. 11.5 kg
<b>FINISHER-Q3/ SADDLE FINISHER-Q4</b>	
Number of trays	2 trays (+ optional tray)
Tray capacity	A4-A5R: 1000 sheets A3: 500 sheets
Staple position	Corner, Double, Saddle Stitch (Q4 only)
Staple capacity	A4: 50 sheets A3: 30 sheets
Saddle Stitch Specifications (Saddle Finisher-Q4 only)	
Paper size	A3, A4R
Staple capacity	1 to 15 sheets (60 pages, 64-80 g/m <sup>2</sup> ) 1 to 10 sheets (40 pages, 81-105 g/m <sup>2</sup> )
Paper weight	64 to 105 g/m <sup>2</sup> (164 g/m <sup>2</sup> for Cover Sheet)
Dimensions	Q3: 536 x 657 x 1036 mm Q4: 648 x 657 x 1036 mm
Weight	Q3: 39.6 kg Q4: 67.6 kg
Other Accessories	Platen Cover-H, Inner 2-way Tray-C1, Buffer Pass Unit-C1, Additional Finisher Tray-A1, Puncher Unit-L1/N1, iR 3100C pedestal, FL Cassette-Y1/Z1, Key Switch Unit-A2, Document Tray-J1, Staple Cartridge-J1, Stamp Inc Cartridge-B1, Card Reader-C1, Card Reader Kit-B1, iR 512MB Expansion RAM-C1 (Standard for Ci Model), Colour UFR II Printer Kit-D1, Super G3 FAX Board-S1, Universal Send PDF Encryption Kit-B1, Universal Send Searchable PDF Kit-A1, Security Expansion Board-E1, iR Security Kit-A2, Web Access Software-B1, Remote Operator's Software Kit-A1, Barcode Printing Kit-A1
Some images are simulated for clarity of reproduction. All data is based on Canon's standard testing methods. This leaflet and the specifications of the product have been developed prior to the date of product launch. Final specifications are subject to change without notice.™ and ®All company and/or product names are trademarks and/or registered trademarks of their respective manufacturers in their markets and/or countries.	

you can  
**Canon**

**Canon Inc.**  
www.canon.com

**Canon Europa N.V.**  
www.canon-europe.com

English-UK Edition 0055W121  
© Canon Europa N.V., 2005 (0705)

**Canon (U.K.) Limited**  
Woodhatch, Reigate  
Surrey RH2 8BF  
Telephone No: 08000 353535  
Facsimile No: 01737 220022  
www.canon.co.uk



Conforms to the International Energy Star program as an MFP and Copier



Canon's GENUINE logo means quality all-round performance



POWERED BY



Canon Europa NV Conservation Partner



**Canon Ireland**  
Arena Road, Sandford  
Industrial Estate  
Dublin 18, Ireland  
Telephone No: 01-2052400  
Facsimile No: 01-2958141  
www.canon.ie